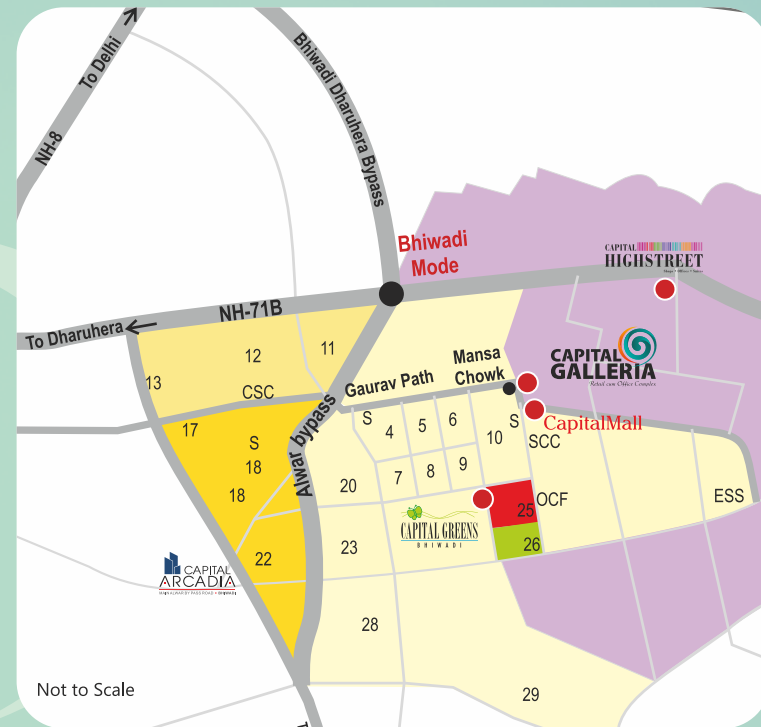


How to reach Capital Galleria



CAPITAL GALLERIA

Retail cum Office Complex



Building No. 44, 1st Floor, Sector 44,
Gurgaon 122002, Haryana.
Tel: 0124 472 5300 - 349 (50 lines) Fax: 0124 472 5349
E-mail: info@rtechgroup.co.in
Web: www.rtechgroup.co.in



Disclaimer : This Brochure is not a legal document. It only describes the conceptual plan.

A Destination for Opportunities

Bhiwadi is a fast developing industrial town, located on the periphery of Delhi NCR and an extension of South of Gurgaon.

Bhiwadi has emerged today as a city of futuristic approach unfolding endless opportunities to entrepreneurs, professionals and upwardly mobile people to nurture their dreams. It is replete with a slew of MNC's world class industries and state-of-the-art residential complexes. It is a hub of automobile and apparel industry with a world class technology and structure.

At Capital Galleria, we welcome you to explore and indulge in the ocean of untapped opportunities. Only for those seeking more, more and more ...



CAPITAL GALLERIA

Retail cum Office Complex





Artistic View

Our Delivered Projects



Capital Mall, Bhiwadi - Operational



Cross Point Mall, Alwar - Operational

Our Milestones

About R-Tech

R-Tech is one of the most rapidly growing business conglomerate with diversified interests across Commercial, Residential, Townships & Retail segments of the real estate arena. After having established in the year 2007, within a short span of 11 years the R-Tech Group has today gone on to become a multifaceted organization posting an impressive growth rate & turnover. Growing at an average rate of 25% year on year, the company has today transformed into an over INR 4000 enterprise.

The Group has mega stakes in the real estate sector where it has created world-class infrastructure spread across 10 million square feet and has plans to add more in the coming years. R-Tech continues to grow and chart new territories under the able stewardship of the Group's Managing Director Mr. Rajesh Kumar Yadav, Mr. Rajinder Kumar Yadav and it's Board of Directors.



Some of the Brands associated with us





Strategic Advantage

Capital Galleria is situated in the heart of the city, Bhiwadi. Just adjacent to our Capital Mall, sharing bounds-boundaries for time bound accomplishment and successful achievements.

It is strategically located amidst upmarket new residential complexes and industrial areas. The neighbouring industrial area boasts of some of the biggest names including HONDA SIEL, TATA, SAINT GOBAIN GLASS, JAQUAR, SHREE CEMENT, SHRIRAM PISTONS, ORIENT CRAFT, BALKRISHNA TYRES, AMTEK AUTO, GILLETTE, BAUSH & LAUMB, OSWAL GROUP, FEDERAL MOGUL, CLIMATE SYSTEM, CAPARO FASTNERS.

Capital Galleria is well connected to Gurgaon through NH8 and Sohna-Dharuhera Road. This makes it easily accessible to the Capital of country. Thereby, making it a promising destination for business & pleasure.

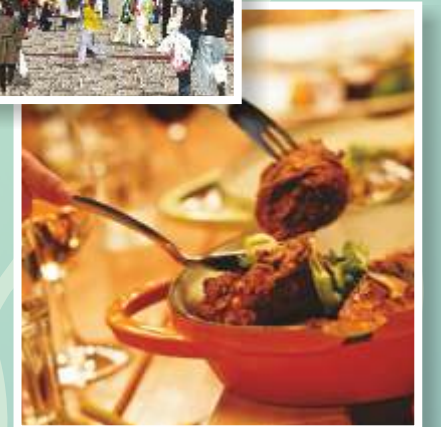




About Capital Galleria

Capital Galleria is spread over 13,250 Sq. mts. (3.31 acres) of area and will truly be the first retail cum commercial space of its kind in Bhiwadi. This is a G+7 storey building. Ground and first floors are specially dedicated to retails and second floor onwards are kept for commercial establishment for their office use. It is a corner plot, having frontage of 735 Sq. Ft.

The majestic front façade will face the main road. It's unique architectural and landscaping will make it essentially an ideal venue for social and cultural events and retail promotions.





Highlights

FEATURES

- 2 Floors for retails
- Office Blocks
- Gym & Spa
- Restaurants
- Food Court

CONVENIENCE

- 100% Power Back-up
- Service & Passengers Lift
- Wide Corridors
- 2 Level Basement Parking

SECURITY

- Earthquake resistant RCC framed structure
- 24 hrs security
- Detailed CCTV controlled security system
- High quality fire fighting and fire alarm system

ECONOMY

- Low maintenance cost

Ground Floor



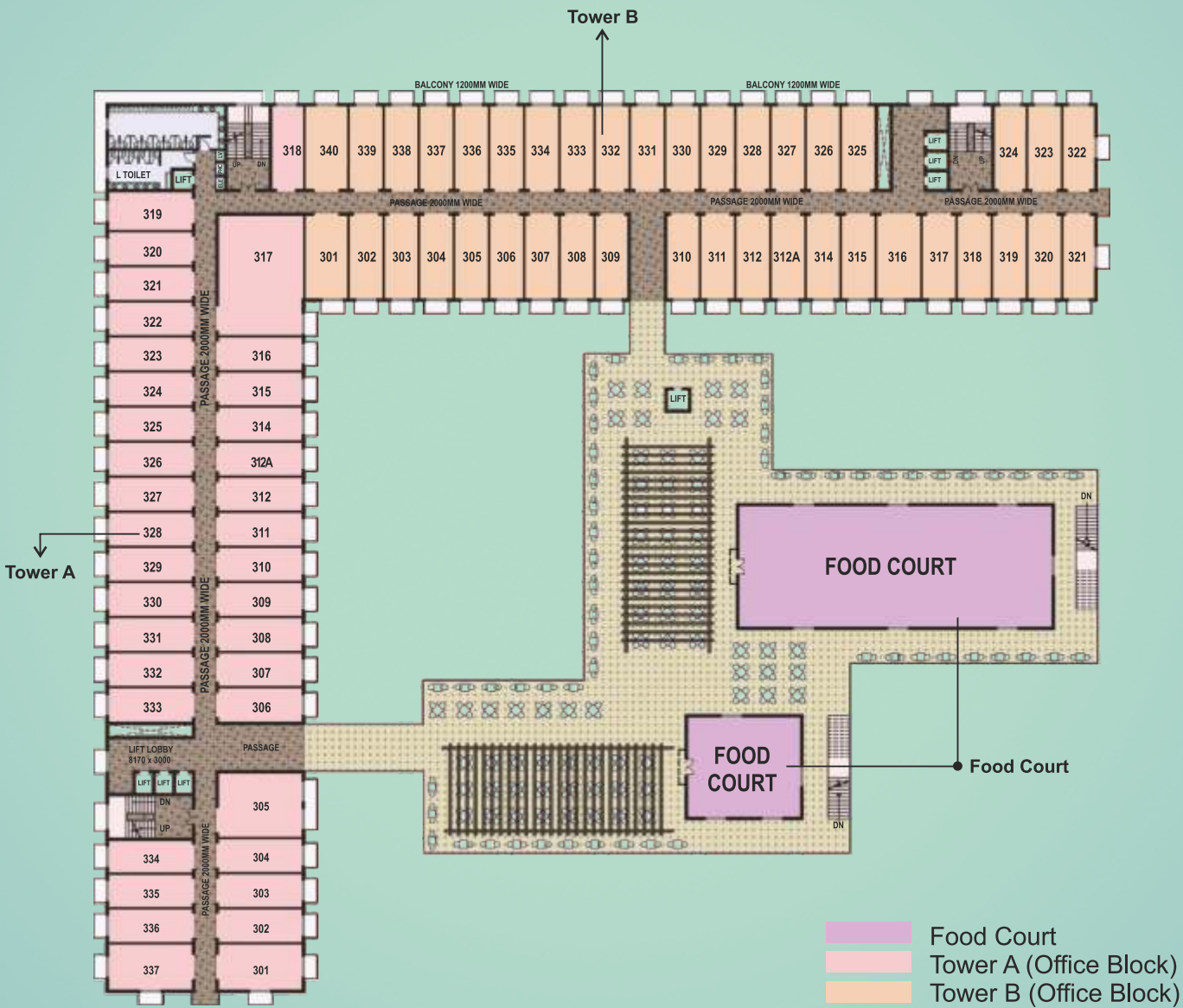
First Floor



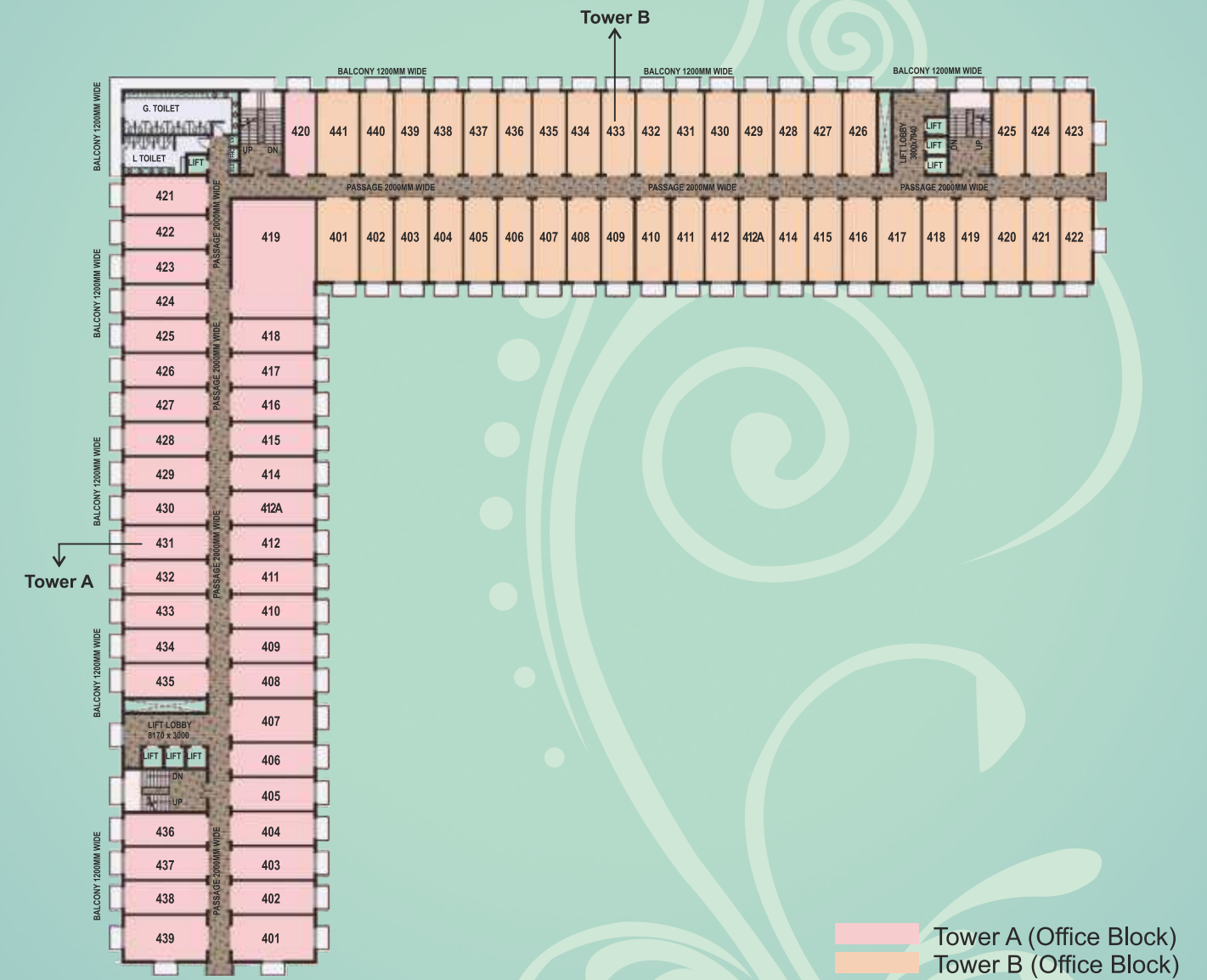
Second Floor



Third Floor



Fourth to Seventh Floor



- Food Court
- Tower A (Office Block)
- Tower B (Office Block)

- Tower A (Office Block)
- Tower B (Office Block)



Artistic View