

RERA Registration No.  
**RAJ/P/2023/2800**  
[www.rera.rajasthan.gov.in](http://www.rera.rajasthan.gov.in)

BEAWAR'S  
PREMIER *Shopping*  
& *lifestyle* HUB

R>TECH  
**CAPITAL**   
**PLAZA**  
— BEAWAR





# BUILDING ON SUCCESS

## Soaring on a growth path with Proven success & leadership

R-Tech Group is one of the most rapidly growing conglomerate business with diversified interests across Commercial, Residential, Townships & Retail Segments of the real estate arena. Being established in the year 2007, within a short span of 17 years, R-Tech Group has today embarked on a journey to become a multifaceted organization posting an impressive growth rate and turnover.

The Group has mega stakes in the real estate sector where it has created world-class infrastructure spread across 12.5 million square feet and has plans to add more in the coming years. R-Tech Group continues to grow and chart new territories under the able stewardship of the Group's Managing Director-Mr. Rajesh Yadav and the Board of Directors including Mr. Rajinder Yadav.



Modern Exterior Facade



Prime Location



24 X 7 Security



High Speed Automatic Lift

## Commercial spaces tailored for your ambitions

Welcome to our latest commercial project, ready to redefine the pinnacle of modernism. With a remarkable exterior facade that perfectly mixes innovation and architectural beauty, this construction stands as a tribute to cutting-edge design. Our project, located in a dynamic urban core, not only provides businesses with a perfect space but also a strategic placement that assures optimum exposure and accessibility. Security is our primary focus, with round-the-clock surveillance and 24-hour security professionals to protect your investment.





R>TECH  
**CAPITAL**  
**PLAZA**  
BEAWAR

- 3 SIDE OPEN
- SITUATED ON A 100 FT. WIDE ROAD
- A HEIGHT OF 4 FLOORS





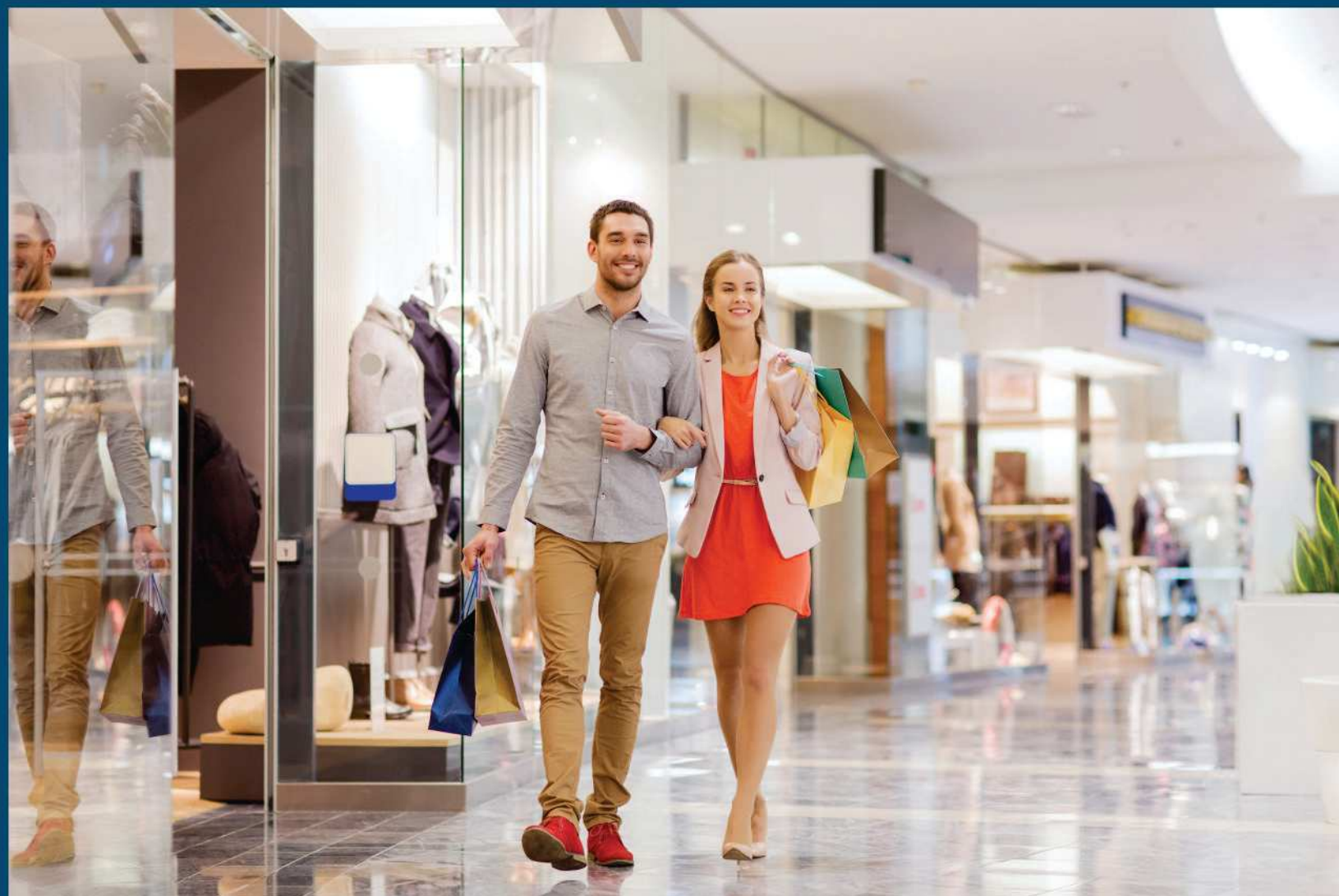
## Seamless opportunities, signature spaces

**Capital Plaza** is more than simply a shopping center; it's a lively tapestry of creativity, flair, and entrepreneurial energy. Our building, located in the heart of Beawar, serves as a beacon for individuals looking for top retail spaces that not only meet business demands but also exemplify the spirit of contemporary aesthetics. Consider a busy hub where each business is a showcase of handpicked quality, providing a one-of-a-kind shopping experience. This precisely constructed facility, which includes stylish retailers and fashionable cafés, is destined to alter the retail sector. Join us on an adventure where business and refinement naturally collide, resulting in a vibrant community of entrepreneurs and customers alike.



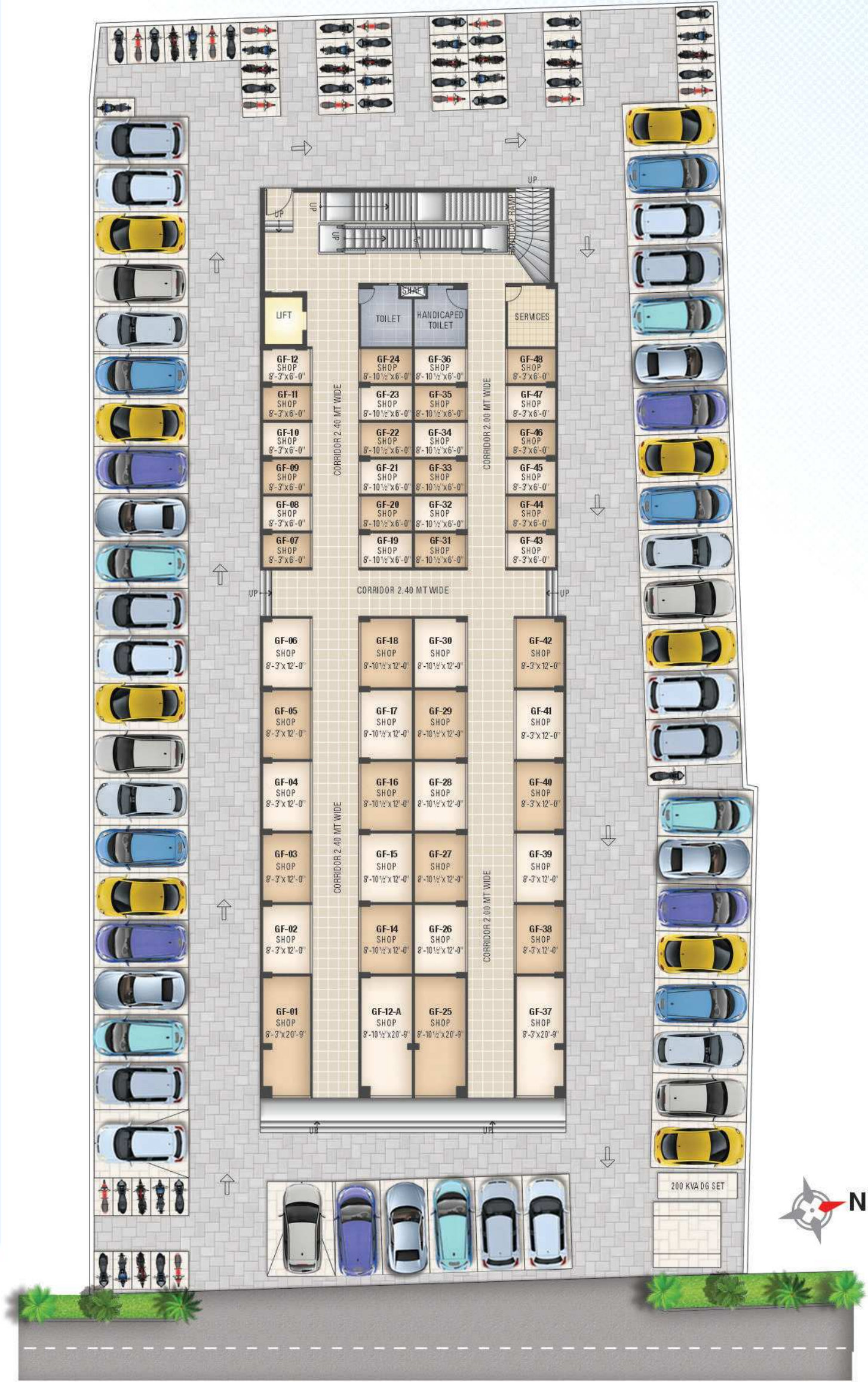
## Shaping your commercial destiny beyond limits

- SHOPS
- KIOSKS MARKET
- JEWELLERY SHOPS
- HANDICRAFT SHOPS
- FOOD COURT

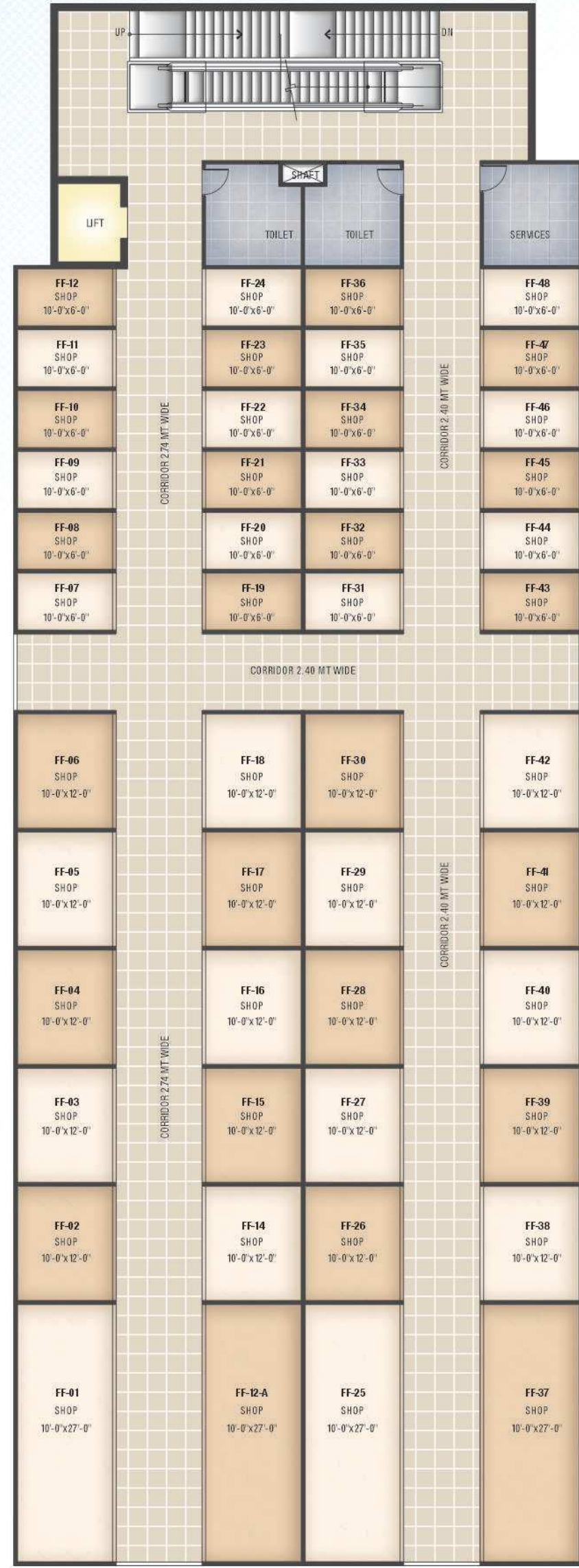




GROUND FLOOR PLAN

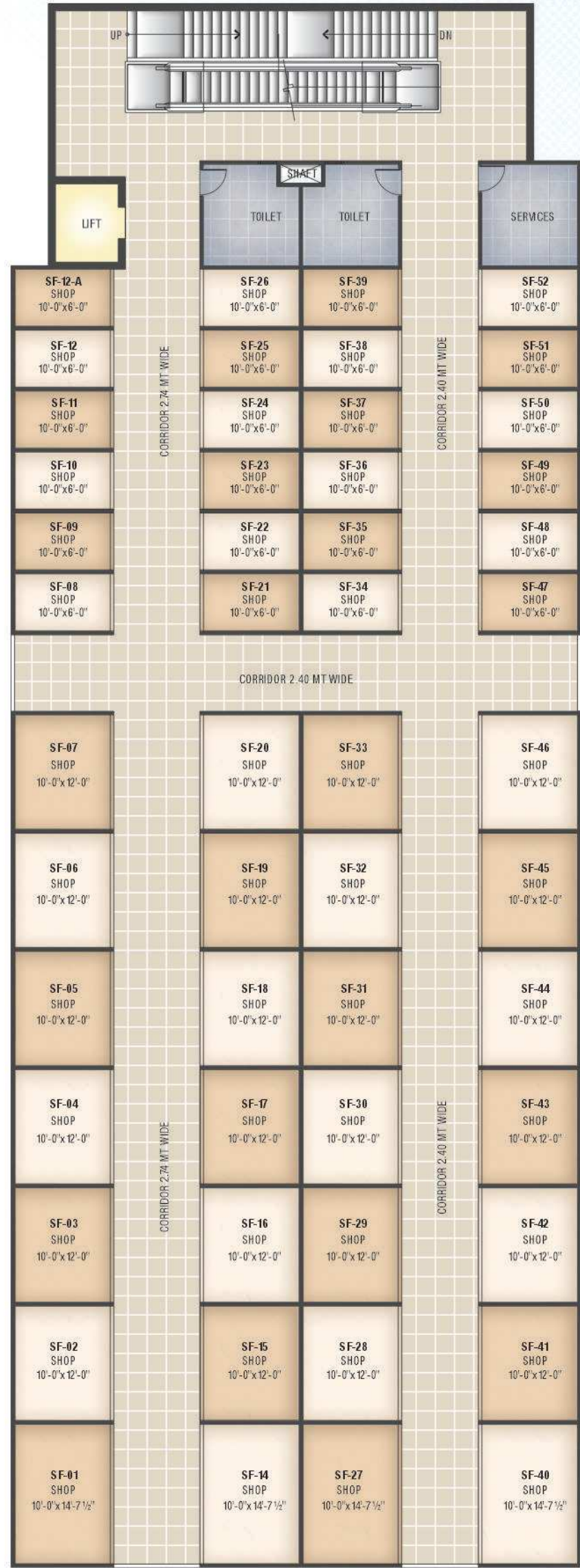


FIRST FLOOR PLAN

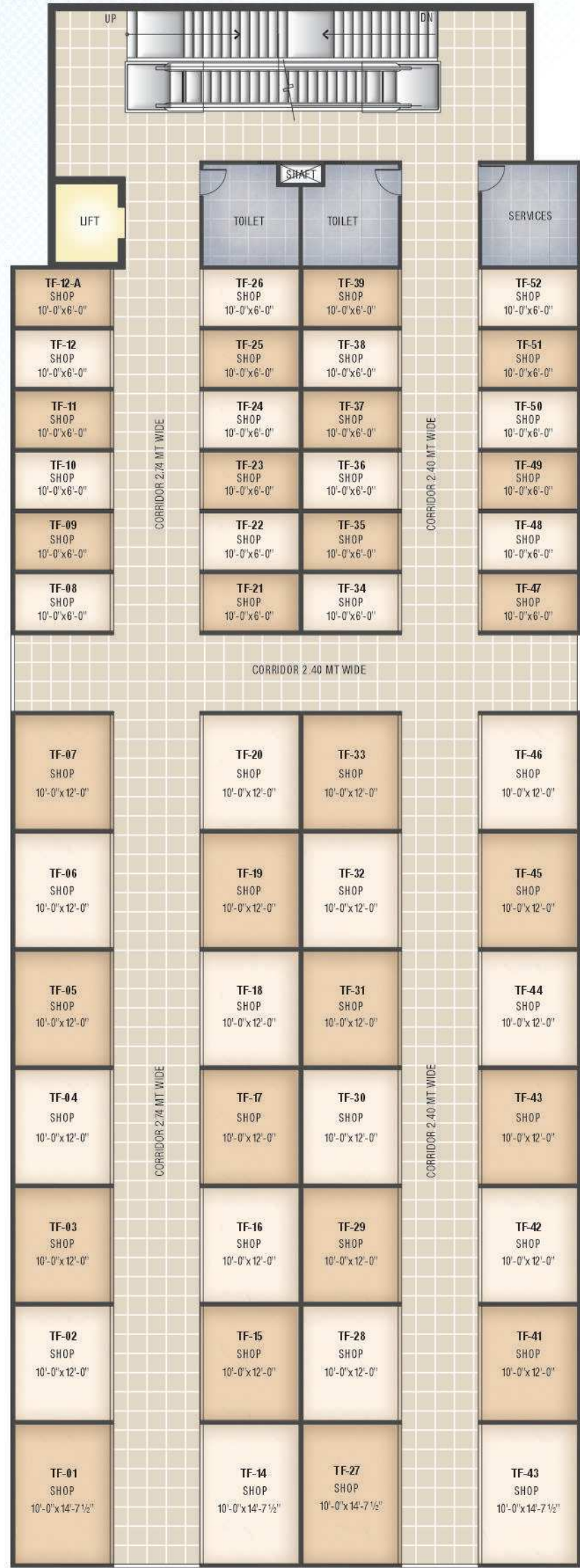




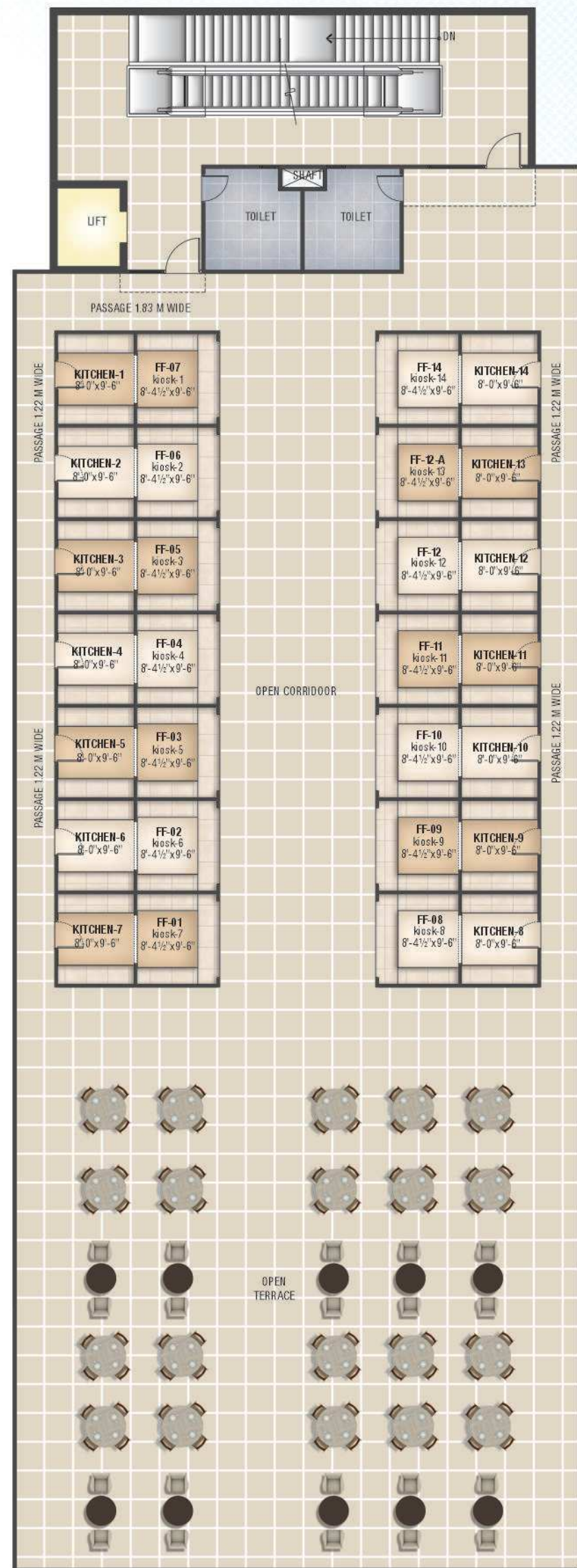
SECOND FLOOR PLAN



THIRD FLOOR PLAN







## Specifications

<b>BUILDING</b>	Reinforced cement concrete (RCC) controlled framed structure & Brick wall partitions with Earthquake Resistant technology.
<b>COMMON AREAS</b>	
<b>FLOORING</b>	Combination of Granite Stone or Ceramic Tiles or Hard wearing floor Material or equivalent.
<b>WALLS</b>	Combinations of Cement-sand Plaster with suitable long-lasting Paints.
<b>TOILETS</b>	<p><b>Flooring</b>-Marble/Granite/other suitable stones/Antiskid Ceramic tiles</p> <p><b>Walls</b>- Ceramic wall tiles up to 7 feet height and acrylic emulsion paint on rest plastered surface.</p> <p><b>Ceiling</b> - False ceiling (Gypsum/POP/Accoustical tile)</p> <p><b>Sanitary ware</b>-Branded EWC, Wash basin, Urinals, Mirrors &amp; Taps</p> <p><b>Door shutter</b>- Laminated wooden flush door shutter with wood/MS frame</p>
<b>VERTICAL CIRCULATION</b>	Lifts and Escalators (JOHNSON, OTIS, SCHINDLER)
<b>EXTERIOR FINISHING</b>	Combination of cement Plaster and Exterior Paint/Texture Paint or equivalent.
<b>SALIENT FEATURES</b>	Power Back-up, External Lighting, Centralized security system, Parking, Water supply, Arrangement for Disposal of Storm & Sullage water.
<b>SPACE/UNIT/SHOP/KIOSK</b>	
<b>FLOORING</b>	Vitrified Tiles or equivalent
<b>WALLS</b>	Plain Cement-sand Plaster
<b>CEILING</b>	Exposed concrete finished with 3 coats of white wash
<b>LIFE SAFETY</b>	Wet Riser/ Hose Reels, Sprinklers, Emergency lighting and Fire detection system connected to the common system of the building in conformity to Fire safety norms and smoke extraction system.
<b>SHOP FRONT</b>	Toughen Glass Facia with Fitted Handle

DISCLAIMER - THESE SPECIFICATIONS CAN BE CHANGED BY THE DEVELOPER AT ANY TIME AT ITS SOLE DISCRETION



# Associated Brands


# Our Landmarks







Site Office:  
New M.C. No. 8/1 & 8/2, Chang Gate, Roopbani  
Cinema Marg , Beawar, Distt. Beawar -305901

Corporate Office:  
Plot No. 3(A), RIICO Indl. Area, Kanakpura,  
Sirsi Road, Vaishali Nagar, Jaipur, Rajasthan - 302034

Disclaimer: The visual representation shown in this brochure are purely conceptual and for reference only and does not resemble any building structure and shall have no bearing, in any manner of booking made in this project and the developer reserve all rights, in this regard. This brochure is not a legal document.